

# TESTIMONIAL

# PLUKEN DERMA **C**

# CREAM



# SKIN ALLERGY

**one week** after using Pluken Derma C cream

BEFORE



Redness

Flare

Itchy

9/9/23



Redness  
reduced

Flare  
reduced

Itchy  
reduced

AFTER

16/9/23

# DARK SPOT (ALLERGY)

one week after using *Pluken Derma C cream*

BEFORE



Visible  
dark spot

AFTER



Dark spot  
reduced  
(visibly lighter)

# DRY & IRRITATED SKIN

12 days after using *Pluken Derma C cream*

BEFORE



Dry, flaky,  
irritated skin

AFTER



Moisturized and  
smoother skin,  
no flakiness



# MILD ECZEMA

4 days after using *Pluken Derma C* cream

BEFORE



Mild skin flare,  
dry

AFTER



Moisturized and  
smoother skin,  
flare reduced

# SENSITIVE & VERY DRY SKIN

7 days after using *Pluken Derma C cream*

BEFORE



Very dry, flaky  
skin

AFTER



Moisturized,  
reduced flakiness

# SKIN ALLERGY

One month after using *Pluken Derma C cream*

BEFORE



Allergy (itchy,  
dry, redness)

AFTER



Reduced red patches,  
itchiness, skin more  
moisturized

# VERY DRY & CRACKED SKIN

Two weeks after using *Pluken Derma C* cream

BEFORE

AFTER



Rough skin,  
very dry,  
cracked

Reduced dry & skin  
crack, skin more  
moisturized



# VERY DRY & CRACKED SKIN

Two weeks after using *Pluken Derma C* cream

BEFORE



Rough skin,  
very dry,  
cracked

AFTER



Reduced dry & skin  
crack, skin more  
moisturized

# VERY DRY & CRACKED SKIN

Two weeks after using *Pluken Derma C* cream

BEFORE



Rough skin,  
very dry,  
cracked

AFTER



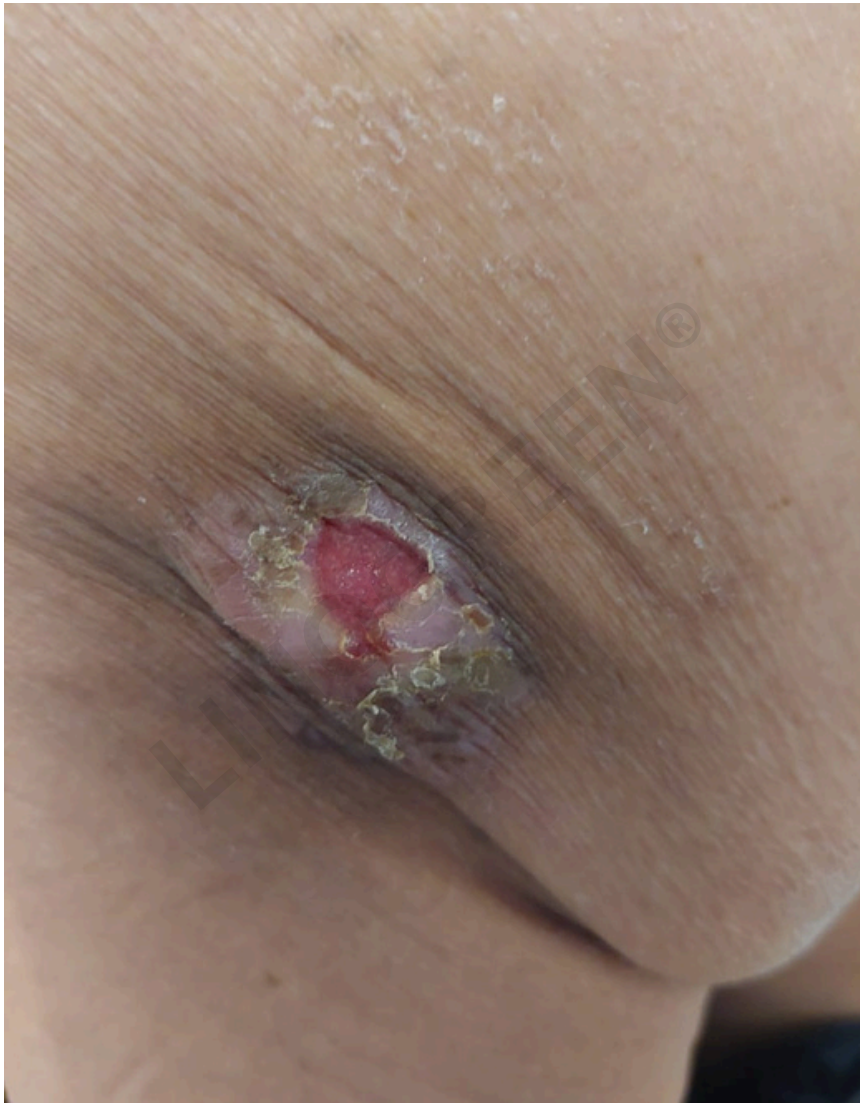
Reduced dry & skin  
crack, skin more  
moisturized



# MINOR BED SORES WOUND

Two weeks after using *Pluken Derma C* cream

BEFORE



Redness, very  
dry, wound

AFTER



Skin healed and  
moisturized

# SKIN PROBLEM

**Two weeks** after using *Pluken Derma C cream*  
+ *LinoGreen Sacha Inchi Oil softgels*

BEFORE

AFTER



Redness, very  
dry & itchy



Reduced redness,  
itchiness and skin  
moisturized